

REVIEW Chapter 16

name _____

- 1 If $f(x) = 2x - x^2$, find: a $f(2)$ b $f(-3)$ c $f(-\frac{1}{2})$

a 0 b -15 c $-5\frac{1}{4}$

$$\frac{7-5}{1-3} = \frac{12}{-2} = -6$$

- 2 Suppose $f(x) = ax + b$ where a and b are constants. If $f(1) = 7$ and $f(3) = -5$, find a and b .

$$\begin{aligned} y &= -6x + b \\ 7 &= -6(1) + b \\ 13 &= b \\ y &= -6x + 13 \end{aligned}$$

$$\begin{aligned} 7 &= m + b \\ -5 &= 3m + b \\ 12 &= -2m \\ m &= -6 \end{aligned}$$

$$\begin{cases} 7 = m(1) + b \\ -5 = m(3) + b \end{cases}$$

- 3) A TV repair man charges \$140 for 2 hrs work. If the same TV repair man gets \$320 for 6 hrs. of work. Find the amount he charges for just arriving and the amount he charges per hour.

$$\begin{aligned} (2, 140) \quad (6, 320) \\ 140 &= m(2) + b \\ 320 &= m(6) + b \end{aligned}$$

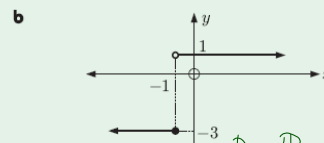
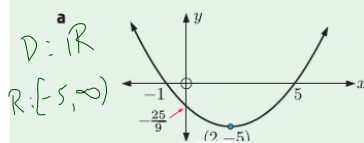
$$\begin{aligned} 320 - 6m + b \\ 140 = 2m + b \\ 180 = 4m \\ m &= 45 \end{aligned}$$

$$y = 45x + 50$$

per hour just arriving

- 4 For each of the following graphs determine:

- i the domain and range
ii the x and y -intercepts
iii whether it is a function.



- 5 Consider $f(x) = \frac{1}{x-5}$

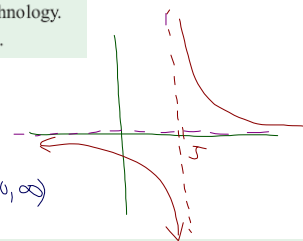
- a For what value of x is $f(x)$ meaningless?
b Sketch the graph of this function using technology.
c State the domain and range of the function.

a) $x \neq 5$

b)

c) $D: x \neq 5$ $R: y \neq 0$

$(-\infty, 0) \cup (0, \infty)$



- 6 A marquee hire company charges £130 for setting up and packing down, and £80 per day of use.

- a Construct a table of values showing the cost $\mathcal{L}C$ of hiring a marquee for d days, for $d = 0, 1, 2, 3, 4$.
b Use your table to graph C against d .
c Use your graph to find the function $C(d)$.
d The company offers a special deal in which the total cost of a week's hire is £650. How much money does this save?

d	1	2	3	4
C	210	290	370	450

$$C = 80d + 130$$

$$C(7) = 80(7) + 130$$

$$= 560 + 130$$

$$= 690 \text{ per week}$$

$$690$$

$$- 650$$

$$40 \text{ in savings}$$